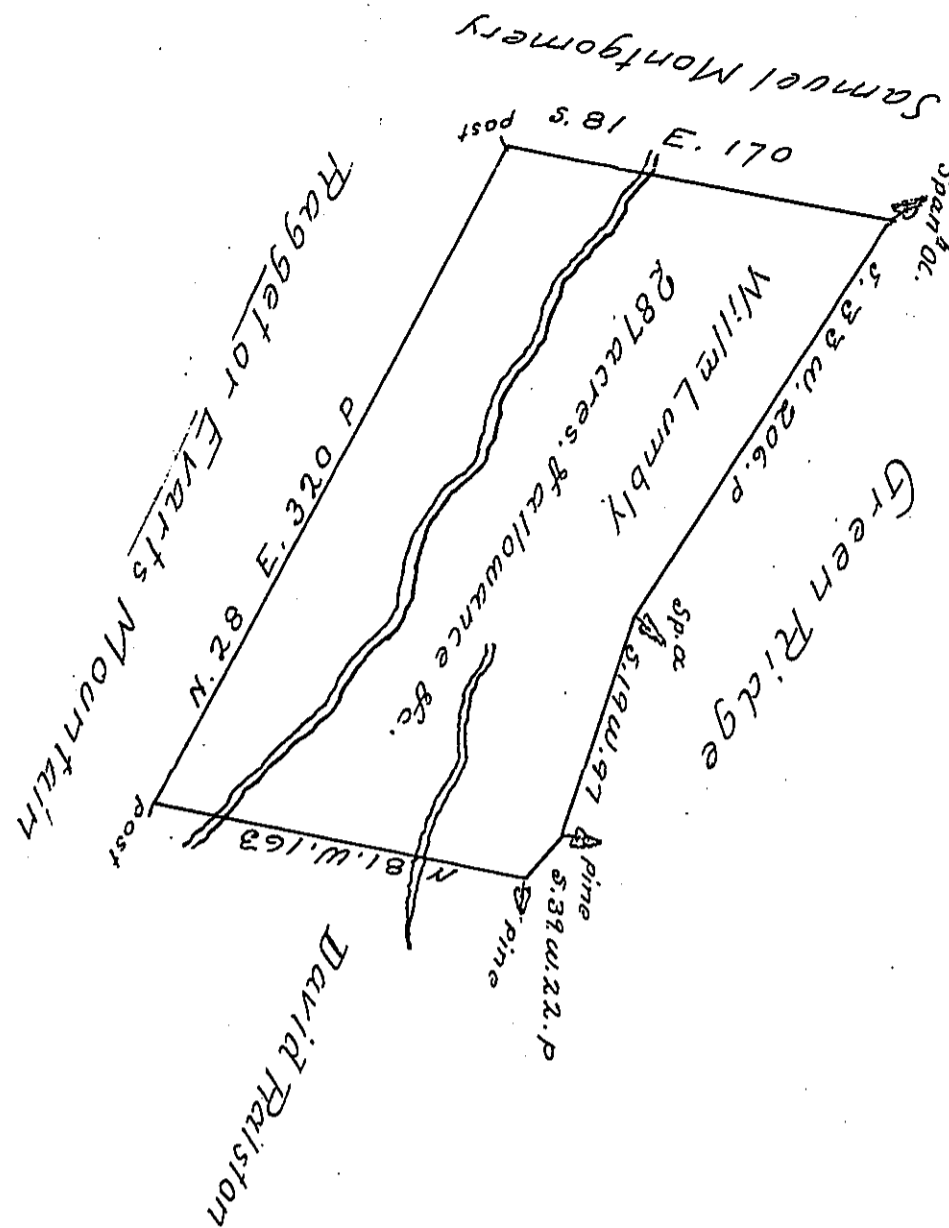


C 52 -167



Order No. 2478 #

A Draught of a Tract of Land Surveyed for William Lumblly
 Situate Between the Green Ridge and Evarts Mountain adjoining
 lands of Samuel Montgomery in Cumberland Valley
 Township and Bedford County. Containing Two Hundred &
 Eighty seven acres and The usual allowance of 6 p^t for
 Roads &c. May 22^d 1783

George Woods D.S.

To John Lukens Esq^r
 Surveyor General.

dated 19 Jan'y. 1767

IN TESTIMONY that the above is a copy of the original remaining on file in
 the Department of Internal Affairs of Pennsylvania, made
 conformably to an Act of Assembly approved the 16th day of
 February, 1833, I have hereunto set my Hand and caused
 the Seal of said Department to be affixed at Harrisburg,
 this first day of September 1905

James P. Brown
 Secretary of Internal Affairs.